



📍 49 Britannia Crescent, Lyneham, Chippenham, SN15 4AN

🏠 £205,000

A spacious two double bedroom semi-detached house, with modern fitted kitchen, generous rear garden, and off-road parking, offering scope to prospective buyers to put their own stamp on it. Offered with No Onward Chain.

- Semi-Detached House
- Two Double Bedrooms
- Spacious Accommodation
- Scope to Improve
- Modern Kitchen
- Shower Room
- Generous Rear Garden
- Off-Road Driveway Parking
- No Onward Chain
- Ideal First Time Purchase

🏠 Freehold

🏠 EPC Rating



A spacious two bedroom semi-detached house, superbly positioned within the popular village of Lyneham, offering easy access to Calne, Chippenham and Swindon. The property offers fantastic scope for prospective buyers to put their own stamp on their next home, and is offered with the benefit of No Onward Chain.

The accommodation is arranged over two levels, and briefly comprises; entrance hall, large dual-aspect sitting room with french doors to sheltered rear patio area, modern fitted kitchen, two double bedrooms, and the family shower room.

Externally there is a generous rear garden, laid predominantly to lawn, with patio seating area, and a useful outside store. There is off-road driveway parking to the front.

Situation

Lyneham is a popular village on the edge of the Dauntsey Vale offering numerous amenities to include two supermarkets, restaurant, public houses and a primary school. The village is conveniently located in the heart of the Wiltshire countryside yet within easy reach of the thriving towns of Royal Wootton Bassett, Calne and Chippenham and close to M4 J.16 and Swindon with it's mainline rail links to London Paddington and Bristol.

Property Information

Tenure: Freehold

Council Tax Band: C

EPC Rating: TBC

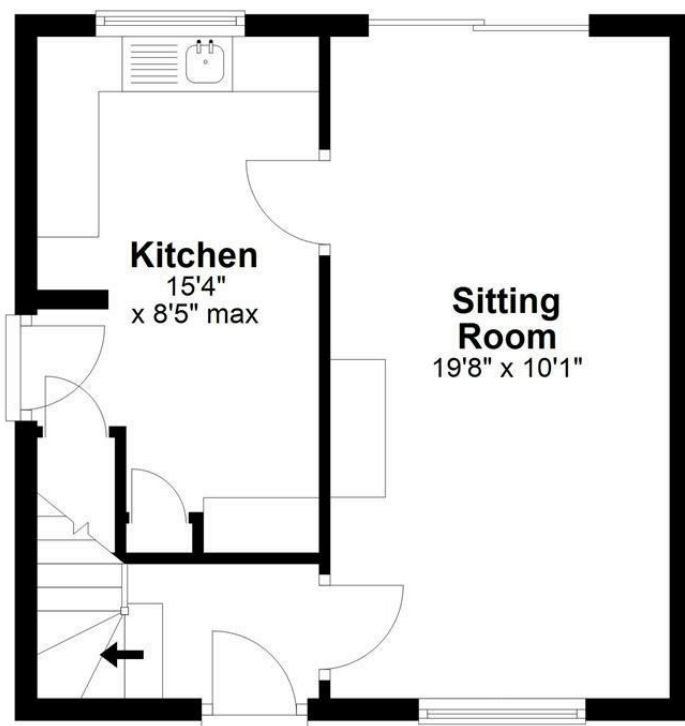
Mains Gas, Electricity, Water & Drainage

Gas Fired Central Heating



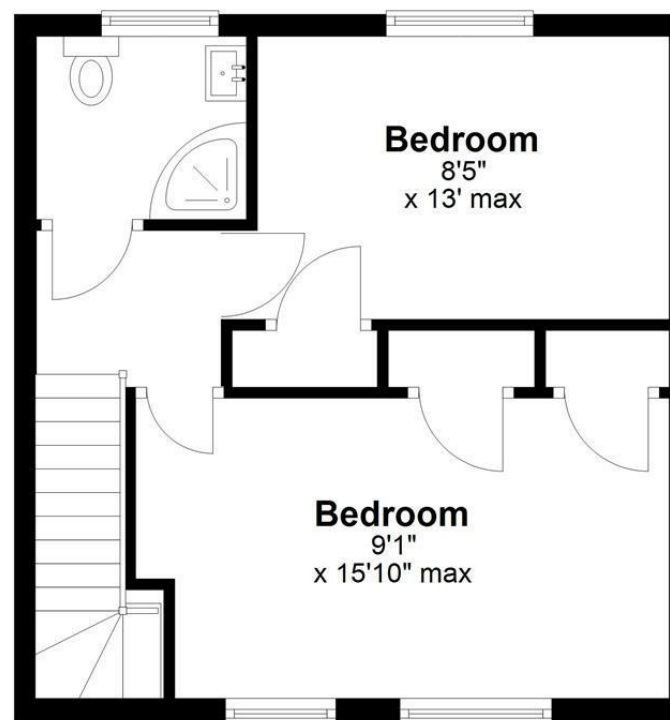
Ground Floor

Approx. 370.8 sq. feet



First Floor

Approx. 371.9 sq. feet



Total area: approx. 742.8 sq. feet

Disclaimer: These particulars, whilst believed to be accurate are set out as a general outline only for guidance and do not constitute any part of an offer or contract. Intending purchasers should not rely on them as statements of representation of fact, but must satisfy themselves by inspection or otherwise as to their accuracy. No person in this firm's employment has the authority to make or give any representation or warranty in respect of the property. All measurements and distances are approximate only. Your home is at risk if you do not keep up repayments on a mortgage or other loan secured on it.